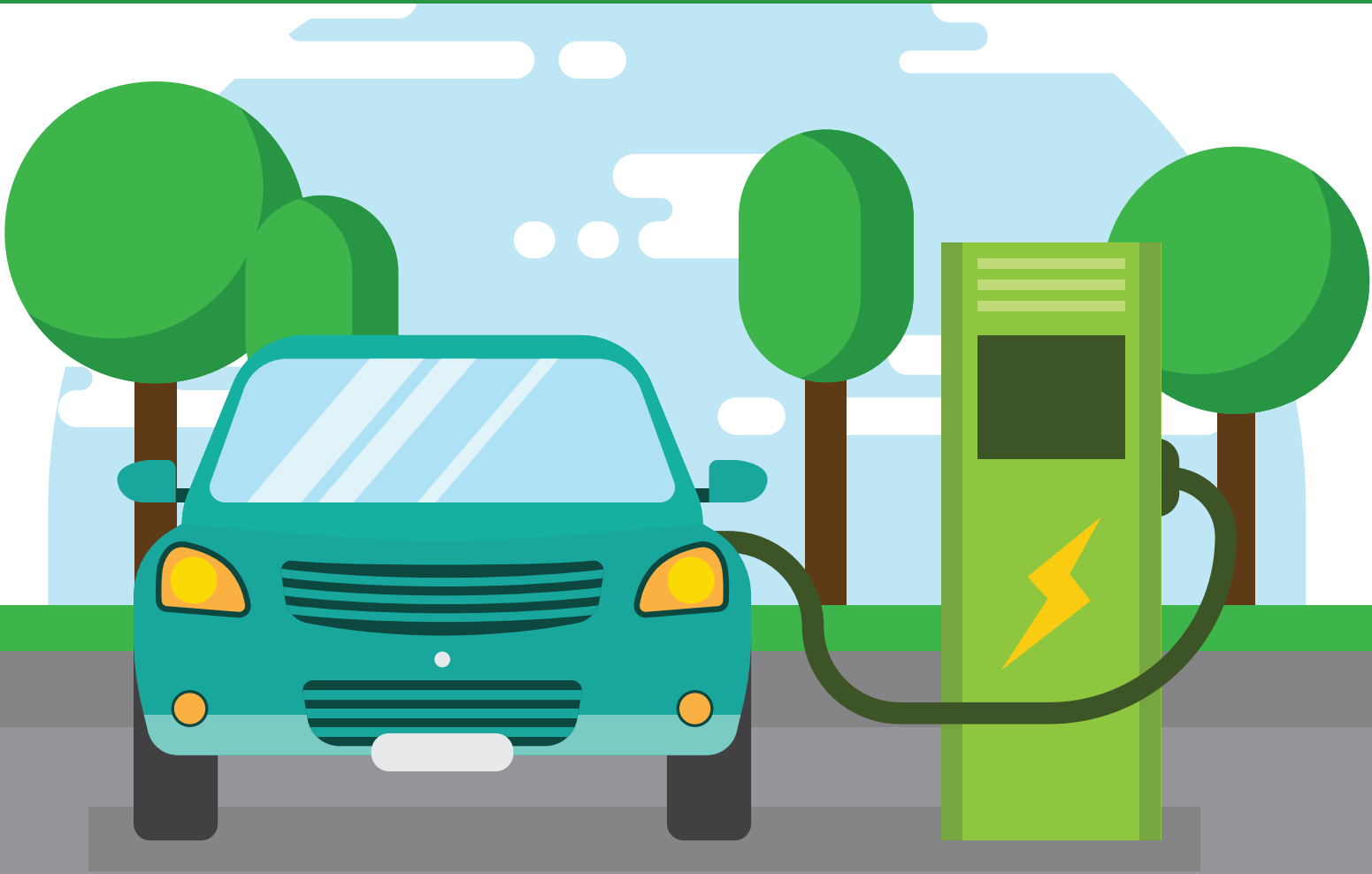


# Residential Car Charging Station Subsidies Application



**This program is designed to promote and support electric vehicles. There are twenty Residential car charging station subsidies available for 2026 on a first come, first serve basis.**

1. Any SNTMA member employee may apply to receive up to a \$250 Residential Charging Subsidy under this program providing their employer is a SNTMA member.
2. Qualified applicants must be registered at [Norcalgo.org](https://www.norcalgo.org) using their work email address.
3. Due to the limited number of funds, Residential Car Charger subsidies will be awarded on a first come, first serve basis.
4. As a condition of funding, recipients will email [stephanie@sntma.org](mailto:stephanie@sntma.org) a receipt for the charging station and a photo of the installed charger to be posted on the SNTMA web site and Facebook page. The receipt for the charging station must be dated within 90 days of the subsidies request.
5. Only one residential car charging station per SNTMA member company employee household.
6. Subject to SNTMA Board of Directors approval.
7. Add your work email to your PayPal account.
8. The buttons to redeem SNTMA subsidies are available the first two business days of the month. On the left side of your [Norcalgo.org](https://www.norcalgo.org) dashboard, select "Rewards" then "Featured."
9. One SNTMA subsidy per month per person.
10. SNTMA subsidies participants have 30 days to retrieve subsidies payments. No exceptions.
11. Maximum subsidy amount \$250